



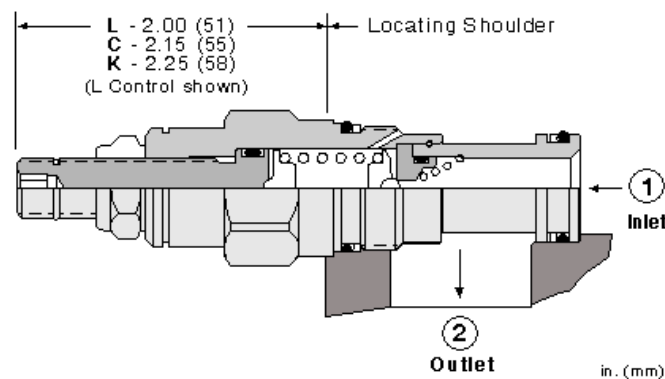
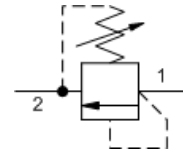
Direct-acting relief valve - pilot capacity

Capacity:
.25 gpm (1 L/min.)

Model:
RBAC

Product Description

Direct-acting, pilot relief cartridges are used to remotely control the pressure setting of other pilot-operated valves. Because capacity is limited to pilot flow, these valves should be used with other valves with comparable pilot flows.

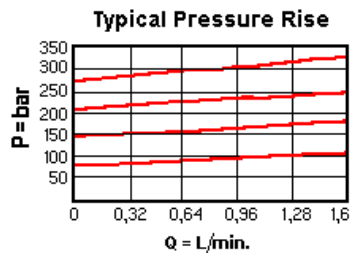
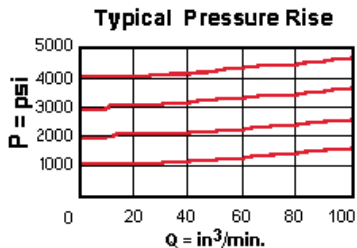


Technical Features

- Main stage orifice is protected by a 150 micron stainless steel screen.
- Corrosion resistant cartridge valves are intended for use in corrosive environments and are identified by the model code suffix /AP (see Option Selection below). External parts are made from stainless steel with titanium or brass components, where applicable. Internal parts are made from carbon steel leaded alloy, the same as standard valves. For further details, please see the Materials of Construction page.
- Suitable for use in load holding applications.
- Incorporates the Sun floating style construction to minimize the possibility of internal parts binding due to excessive installation torque and/or cavity/cartridge machining variations.
- Back pressure on the tank port (port 2) is directly additive to the valve setting at a 1:1 ratio.

Technical Data

	U.S. Units	Metric Units
Cavity		T-10A
Capacity	.25 gpm	1 L/min.
Maximum Operating Pressure	5000 psi	350 bar
Maximum Valve Leakage at 110 SUS (24 cSt)	5 drops/min.	0,3 cc/min.
Response Time - Typical		2 ms
Series (from Cavity)		Series 1
Adjustment - Number of Clockwise Turns to Increase Setting		5
Valve Hex Size	7/8 in.	22,2 mm
Valve Installation Torque	30 - 35 lbf ft	40 - 50 Nm
Adjustment Screw Internal Hex Size	5/32 in.	4 mm
Adjustment Locknut/Cap Hex Size	9/16 in.	15 mm
Adjustment Nut Torque	80 - 90 lbf in.	9 - 10 Nm
Seal Kits - Cartridge		Buna: 990-010-007
Seal Kits - Cartridge		Viton: 990-010-006
Model Weight	0.30 lb.	0.14 kg.



RBAC-LAN

Control	Adjustment Range	Seal Material	Material/Coating Modifier
Preferred Options	Preferred Options	Preferred Options	Preferred Options
L Standard Screw Adjustment Standard Options	A 25 - 3000 psi (1,7 - 210 bar), 1000 psi (70 bar) Standard Setting	N Buna-N Standard Options	No modifier (standard material with no special coating) Special Options
C* Tamper Resistant - Factory Set	W 25 - 4500 psi (1,7 - 315 bar), 1000 psi (70 bar) Standard Setting	V Viton	/AP Stainless Steel, Passivated
F Hex Head Screw with Locknut	Standard Options		Control: C
J Capped Screw Adjustment			Control: L
K Handknob	B 25 - 1500 psi (1,7 - 105 bar), 1000 psi (70 bar) Standard Setting		<i>Our stainless product line is growing! If you are interested in a stainless option for this model which is not shown please contact Sun.</i>
O Handknob with Panel Mount	C 25 - 6000 psi (1,7 - 420 bar), 1000 psi (70 bar) Standard Setting		
	D 25 - 800 psi (1,7 - 55 bar), 400 psi (28 bar) Standard Setting		
	E 25 - 400 psi (1,7 - 28 bar), 200 psi (14 bar) Standard Setting		

Additional Options

Control	Adjustment Range	Seal Material
M Capped Screw Adjustment with Lockwire Holes		
Q* Capped and Lockwired		
T* Tamper Proof - Factory Set		

When the modifier is /AP, the control must be C or L

* Special Setting required, specify at time of order
Customer specified setting stamped on hex.