



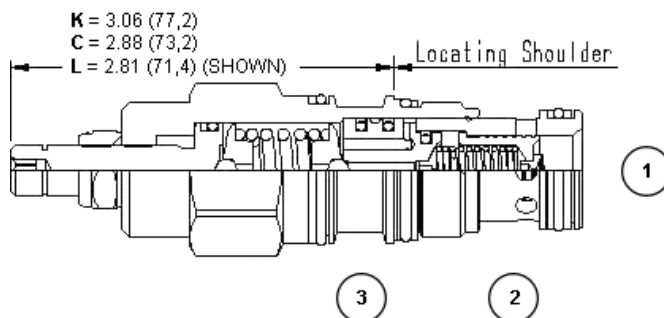
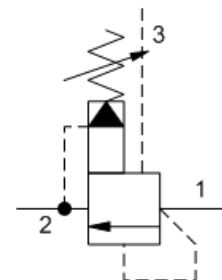
Ventable, pilot operated, balanced piston relief valve

Capacity:
30 gpm (120 L/min.)

Model:
RVEA

Product Description

Ventable, pilot-operated, balanced piston relief cartridges are normally closed pressure regulating valves. When the pressure at the inlet (port 1) reaches the valve setting, the valve starts to open to tank (port 2), throttling flow to regulate the pressure. They provide a vent port (port 3) that connects between the main piston and pilot stage to provide for remote control by other pilot or 2-way valves. These valves are accurate, have low pressure rise vs. flow, they are smooth and quiet, and are moderately fast.



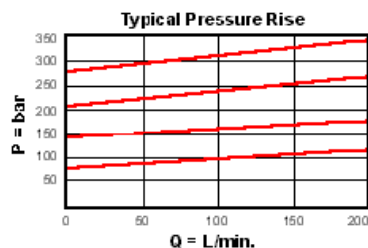
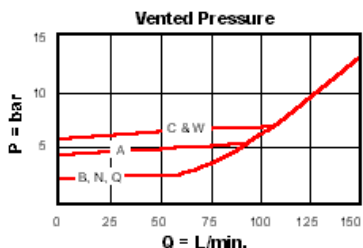
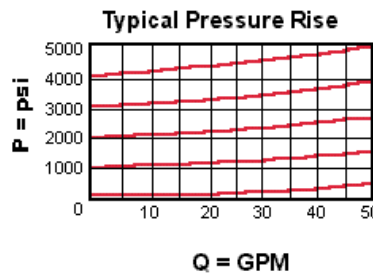
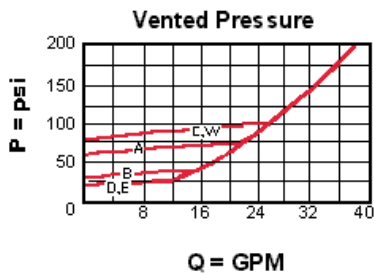
Technical Features

- A remote pilot relief on port 3 (vent) will control the valve below its own setting.
- Will accept maximum pressure at port 2; suitable for use in cross port relief circuits. If used in cross port relief circuits, consider spool leakage.
- Main stage orifice is protected by a 150 micron stainless steel screen.
- Not suitable for use in load holding applications due to spool leakage.
- Back pressure on the tank port (port 2) is directly additive to the valve setting at a 1:1 ratio.
- Incorporates the Sun floating style construction to minimize the possibility of internal parts binding due to excessive installation torque and/or cavity/cartridge machining variations.

Technical Data

	U.S. Units	Metric Units
Cavity		T-2A
Capacity	30 gpm	120 L/min.
Control Pilot Flow	10 - 15 in ³ /min.	0,16 - 0,25 L/min.
Factory Pressure Settings Established at	4 gpm	15 L/min.
Maximum Operating Pressure	5000 psi	350 bar
Maximum Valve Leakage at 110 SUS (24 cSt)	3 in ³ /min.@1000 psi	50 cc/min.@70 bar
Response Time - Typical		10 ms
Series (from Cavity)		Series 2
Adjustment - Number of Clockwise Turns to Increase Setting		5
Valve Hex Size	1 1/8 in.	28,6 mm
Valve Installation Torque	45 - 50 lbf ft	60 - 70 Nm
Adjustment Screw Internal Hex Size	5/32 in.	4 mm
Adjustment Locknut/Cap Hex Size	9/16 in.	15 mm

Adjustment Nut Torque	80 - 90 lbf in.	9 - 10 Nm
Seal Kits - Cartridge	Buna: 990-202-007	
Seal Kits - Cartridge	Viton: 990-202-006	
Model Weight	0.64 lb.	0.29 kg.



RVEA-LAN

Control	Adjustment Range	Seal Material	Material/Coating Modifier
Preferred Options	Preferred Options	Preferred Options	Preferred Options
L Standard Screw Adjustment Standard Options	A 100 - 3000 psi (7 - 210 bar), 1000 psi (70 bar) Standard Setting	N Buna-N Standard Options	No modifier (standard material with no special coating) Special Options
C* Tamper Resistant - Factory Set	W 150 - 4500 psi (10,5 - 315 bar), 1000 psi (70 bar) Standard Setting	V Viton	/AP Stainless Steel, Passivated
K Handknob	Standard Options		Control: C
O Handknob with Panel Mount	B 50 - 1500 psi (3,5 - 105 bar), 1000 psi (70 bar) Standard Setting		Control: L
	C 150 - 6000 psi (10,5 - 420 bar), 1000 psi (70 bar) Standard Setting		
	D 25 - 800 psi (1,7 - 55 bar), 400 psi (28 bar) Standard Setting		
	E 25 - 400 psi (1,7 - 28 bar), 200 psi (14 bar) Standard Setting		

Our stainless product line is growing! If you are interested in a stainless option for this model which is not shown please contact Sun.

Additional Options

Control	Adjustment Range	Seal Material
M Capped Screw Adjustment with Lockwire Holes	F 75 - 6000 psi (5 - 420 bar), 1000 psi (70 bar) Standard Setting	
Q* Capped and Lockwired	G 60 - 3000 psi (4 - 210 bar), 1000 psi (70 bar) Standard Setting	
	H 30 - 3000 psi (2 - 210 bar), 1000 psi (70 bar) Standard Setting	
	I 15 - 1500 psi (1 - 105 bar), 1000 psi (70 bar) Standard Setting	

- J 25 - 1500 psi (1,7 - 105 bar), 1000 psi (70 bar) Standard Setting
- K 75 - 1500 psi (5 - 105 bar), 1000 psi (70 bar) Standard Setting
- L 15 - 800 psi (1 - 55 bar), 400 psi (28 bar) Standard Setting
- M 40 - 800 psi (2,8 - 55 bar), 400 psi (28 bar) Standard Setting
- N 60 - 800 psi (4 - 55 bar), 400 psi (28 bar) Standard Setting
- O 15 - 400 psi (1 - 28 bar), 200 psi (14 bar) Standard Setting
- P 40 - 400 psi (2,8 - 28 bar), 200 psi (14 bar) Standard Setting
- Q 60 - 400 psi (4 - 28 bar), 200 psi (14 bar) Standard Setting
- R 15 - 200 psi (1 - 14 bar), 100 psi (7 bar) Standard Setting
- S 25 - 200 psi (1,7 - 14 bar), 100 psi (7 bar) Standard Setting
- T 40 - 200 psi (2,8 - 14 bar), 100 psi (7 bar) Standard Setting
- U 60 - 200 psi (4 - 14 bar), 100 psi (7 bar) Standard Setting
- V 150 - 800 psi (10,5 - 55 bar), 400 psi (28 bar) Standard Setting
- Y 30 - 4500 psi (2 - 315 bar), 1000 psi (70 bar) Standard Setting

When the modifier is /AP, the control must be C or L

* Special Setting required, specify at time of order
Customer specified setting stamped on hex.