



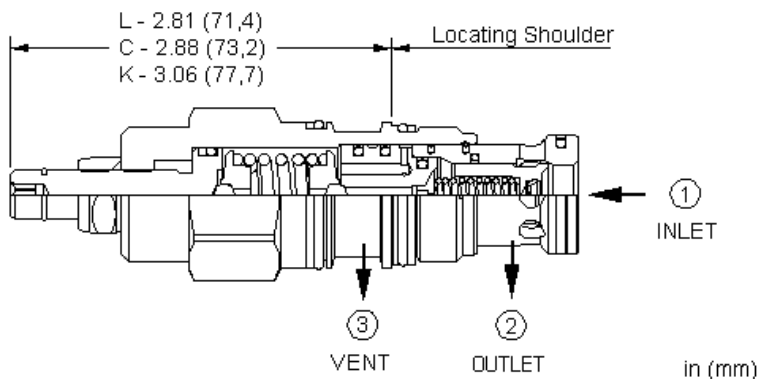
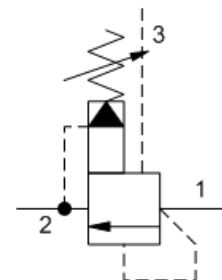
## Ventable, pilot operated, balanced poppet relief valve

Capacity:  
25 gpm (95 L/min.)

Model:  
RVES

### Product Description

Ventable, pilot-operated, balanced-poppet relief cartridges are normally closed pressure regulating valves. When the pressure at the inlet (port 1) reaches the valve setting, the valve starts to open to tank (port 2), throttling flow to regulate the pressure. They provide a vent port (port 3) that connects between the main piston and pilot stage to provide for remote control by other pilot or 2-way valves. These valves are accurate, have low pressure rise vs. flow, they are smooth and quiet, and are moderately fast.



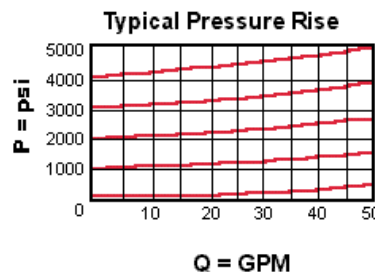
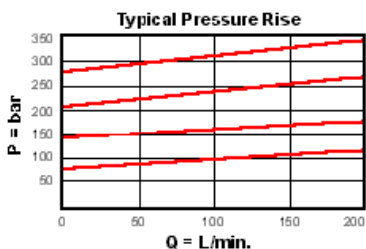
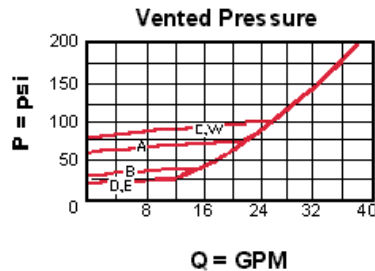
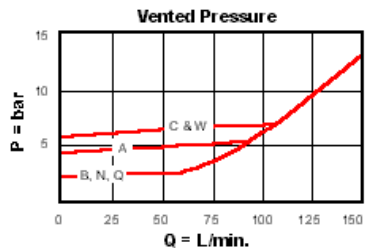
### Technical Features

- Because the modulating occurs inside the cartridge, these valves are immune to most of the problems associated with cavitation, namely noise and manifold erosion.
- Suitable for use in load holding applications, providing that any valving on the vent port (port 3) is zero leak.
- Will accept maximum pressure at port 2; suitable for use in cross port relief circuits.
- A remote pilot relief on port 3 (vent) will control the valve below its own setting.
- Valve is relatively insensitive to varying oil temperatures and oil borne contamination.
- Main stage orifice is protected by a 150 micron stainless steel screen.
- Back pressure on the tank port (port 2) is directly additive to the valve setting at a 1:1 ratio.
- Incorporates the Sun floating style construction to minimize the possibility of internal parts binding due to excessive installation torque and/or cavity/cartridge machining variations.

### Technical Data

	U.S. Units	Metric Units
Capacity		T-2A
Capacity	25 gpm	95 L/min.
Control Pilot Flow	15 - 20 in <sup>3</sup> /min.	0,25 - 0,33 L/min.
Factory Pressure Settings Established at	4 gpm	15 L/min.
Maximum Operating Pressure	5000 psi	350 bar
Maximum Valve Leakage at Reseat	10 drops/min.	0,7 cc/min.
Response Time - Typical		2 ms
Series (from Cavity)		Series 2
Adjustment - Number of Clockwise Turns to Increase Setting		5
Valve Hex Size	1 1/8 in.	28,6 mm

Valve Installation Torque	45 - 50 lbf ft	60 - 70 Nm
Adjustment Screw Internal Hex Size	5/32 in.	4 mm
Adjustment Locknut/Cap Hex Size	9/16 in.	15 mm
Adjustment Nut Torque	80 - 90 lbf in.	9 - 10 Nm
Seal Kits - Cartridge	Buna: 990-402-007	
Seal Kits - Cartridge	Viton: 990-402-006	
Model Weight	0.64 lb.	0.29 kg.



RVES-LAN

Control	Adjustment Range	Seal Material	Material/Coating Modifier
Standard Options	Standard Options	Standard Options	Preferred Options
C* Tamper Resistant - Factory Set	A 100 - 3000 psi (7 - 210 bar), 1000 psi (70 bar) Standard Setting	N Buna-N	No modifier (standard material with no special coating)
K Handknob	B 50 - 1500 psi (3,5 - 105 bar), 1000 psi (70 bar) Standard Setting	V Viton	Special Options
L Standard Screw Adjustment	C 150 - 6000 psi (10,5 - 420 bar), 1000 psi (70 bar) Standard Setting		/AP Stainless Steel, Passivated
	N 60 - 800 psi (4 - 55 bar), 400 psi (28 bar) Standard Setting		Control: C
	Q 60 - 400 psi (4 - 28 bar), 200 psi (14 bar) Standard Setting		Control: L
	W 150 - 4500 psi (10,5 - 315 bar), 1000 psi (70 bar) Standard Setting		

*Our stainless product line is growing! If you are interested in a stainless option for this model which is not shown please contact Sun.*

When the modifier is /AP, the control must be C or L

\* Special Setting required, specify at time of order  
Customer specified setting stamped on hex.

