



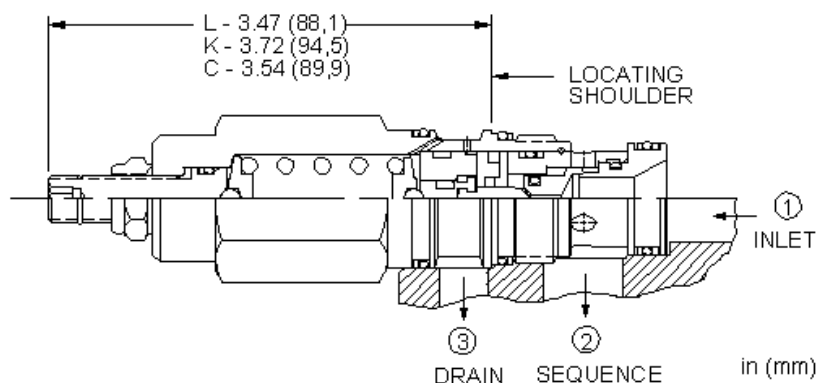
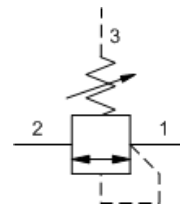
## Direct-acting sequence valve without reverse flow check

Capacity:  
30 gpm (120 L/min.)

Model:  
SXE A

### Product Description

Direct-acting sequence valves will supply a secondary circuit with flow once the pressure at the inlet (port 1) has exceeded the valve setting. The pressure setting of a sequence valve controls the pressure at port 1 relative to the pressure at the drain (port 3).



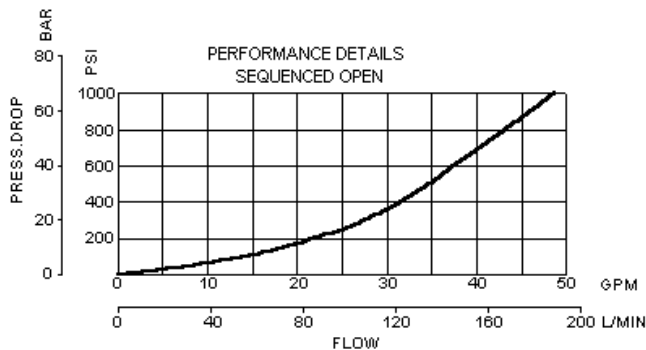
### Technical Features

- Pressure at port 3 is directly additive to the valve setting at a 1:1 ratio and should not exceed 5000 psi (350 bar).
- Although this is a zero pilot flow valve, port 3 (drain) must be connected to maintain a pressure reference in the control chamber. If port 3 is blocked, reciprocating seal weepage will cause the valve to malfunction.
- All 3 port sequence cartridges are physically and functionally interchangeable (i.e. same flow path, same cavity for a given frame size).
- Suitable for use in load holding applications.
- Incorporates the Sun floating style construction to minimize the possibility of internal parts binding due to excessive installation torque and/or cavity/cartridge machining variations.

### Technical Data

	U.S. Units	Metric Units
Cavity		T-2A
Capacity	30 gpm	120 L/min.
Factory Pressure Settings Established at	2 in <sup>3</sup> /min.	30 cc/min.
Maximum Operating Pressure	5000 psi	350 bar
Maximum Valve Leakage at Reseat	10 drops/min.	0,7 cc/min.
Response Time - Typical		2 ms
Series (from Cavity)		Series 2
U.S. Patent #		4,834,135
Adjustment - Number of Clockwise Turns to Increase Setting		4
Valve Hex Size	1 1/8 in.	28,6 mm
Valve Installation Torque	45 - 50 lbf ft	60 - 70 Nm
Adjustment Screw Internal Hex Size	5/32 in.	4 mm
Adjustment Locknut/Cap Hex Size	9/16 in.	15 mm

Adjustment Nut Torque	80 - 90 lbf in.	9 - 10 Nm
Seal Kits - Cartridge	Buna: 990-202-007	
Seal Kits - Cartridge	Viton: 990-202-006	
Model Weight	0.80 lb.	0.36 kg.



### SXEA-LAN

Control	Adjustment Range	Seal Material
Standard Options	Standard Options	Standard Options
C* Tamper Resistant - Factory Set	A 500 - 3000 psi (35 - 210 bar), 1000 psi (70 bar) Standard Setting	N Buna-N
L Standard Screw Adjustment	B 300 - 1500 psi (20 - 105 bar), 1000 psi (70 bar) Standard Setting	V Viton
	C 2000 - 6000 psi (140 - 420 bar), 2000 psi (140 bar) Standard Setting	
	D 200 - 800 psi (14 - 55 bar), 400 psi (28 bar) Standard Setting	
	E 2000 - 6000 psi (140 - 420 bar), 2000 psi (140 bar) Standard Setting	
	W 800 - 4500 psi (55 - 315 bar), 1000 psi (70 bar) Standard Setting	

*Additional Options*

Control	Adjustment Range	Seal Material
K Handknob		

\* Special Setting required, specify at time of order  
Customer specified setting stamped on hex.