



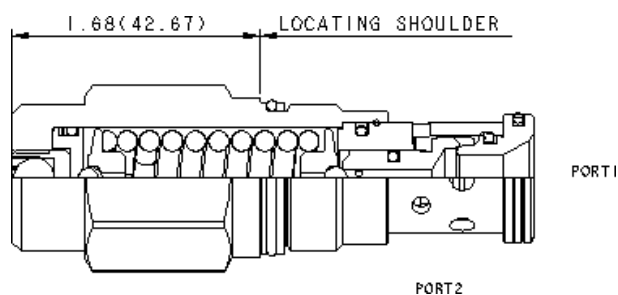
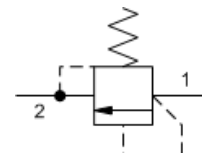
## Non-adjustable direct-acting relief valve

Capacity:  
50 gpm (200 L/min.)

Model:  
RDFA3

### Product Description

Non-adjustable direct-acting relief cartridges are normally closed, pressure-limiting valves used to protect hydraulic components from pressure transients. When the pressure at the inlet (port 1) reaches the valve setting, the valve starts to open to tank (port 2), throttling flow to limit the pressure rise. These valves are smooth and quiet, essentially zero leak, dirt tolerant, immune to silting and are very fast.

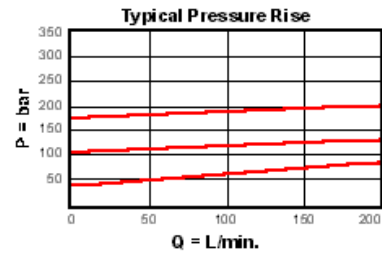
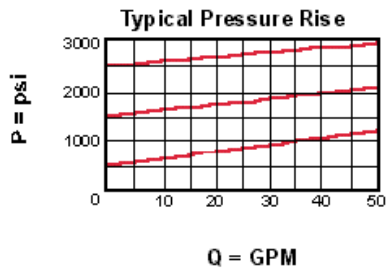


### Technical Features

- Customer must specify setting. The valve will be factory set and is tamper proof.
- Valve is relatively insensitive to varying oil temperatures and oil borne contamination.
- Select a spring range where the desired relief setting is approximately mid-range to high between the minimum and maximum pressure to ensure maximum valve repeatability.
- Will accept maximum pressure at port 2; suitable for use in cross port relief circuits.
- Back pressure on the tank port (port 2) is directly additive to the valve setting at a 1:1 ratio.
- Suitable for use in load holding applications.
- All 2-port relief cartridges (except pilot reliefs) are physically and functionally interchangeable (same flow path, same cavity for a given frame size).
- Incorporates the Sun floating style construction to minimize the possibility of internal parts binding due to excessive installation torque and/or cavity/cartridge machining variations.

### Technical Data

	U.S. Units	Metric Units
Cavity		T-3A
Capacity	50 gpm	200 L/min.
Factory Pressure Settings Established at	4 gpm	15 L/min.
Maximum Operating Pressure	5000 psi	350 bar
Maximum Valve Leakage at Reseat	10 drops/min.	0,7 cc/min.
Response Time - Typical		2 ms
Series (from Cavity)		Series 2
U.S. Patent #		4,742,846
Reseat		>90 % of Set Pressure
Valve Hex Size	1 1/8 in.	28,6 mm
Valve Installation Torque	45 - 50 lbf ft	60 - 70 Nm
Seal Kits - Cartridge		Buna: 990-303-007
Seal Kits - Cartridge		Viton: 990-303-006
Model Weight	0.62 lb.	0.28 kg.



R DFA-3AN

Adjustment Range

Standard Options

- A\* 500 - 3000 psi (35 - 210 bar)
- C\* 1000 - 6000 psi (70 - 420 bar)
- D\* 200 - 800 psi (14 - 55 bar)

Seal Material

Standard Options

- N Buna-N
- V Viton

\* Special Setting required, specify at time of order