



Direct-acting relief valve, CE marked

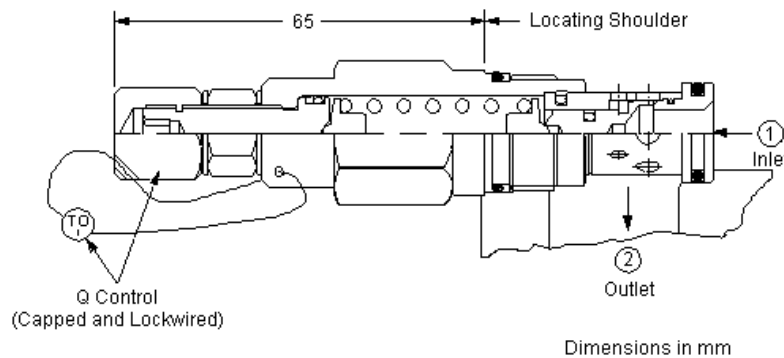
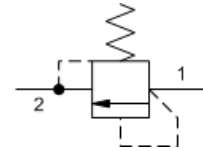
Capacity:
19.8 gpm (75 L/min.)

Model:
RDDT

Product Description

Direct-acting relief cartridges are normally closed, pressure-limiting valves used to protect hydraulic components from pressure transients. When the pressure at the inlet (port 1) reaches the valve setting, the valve starts to open to tank (port 2), throttling flow to limit the pressure rise. These valves are smooth and quiet, essentially zero leak, dirt tolerant, immune to silting and are very fast.

The CE marked valve is a safety valve that meets the requirements of the European Directive for Pressurized Devices (PED) 97/23/EC. The valve setting is the excess operating pressure at which the valve opens. The capacity can be read off from the chart. It shows an approved flow which depends on the excess operating pressure. As a requirement of the PED the system pressure at the maximum approved flow is max. 10% above the excess operating pressure.



Technical Features

- This valve is tested and set at Sun GmbH in Germany.
- Standard settings for preset valves include: 100 bar, 140 bar, 160 bar, 210 bar, 250 bar and 330 bar.
- At this time RDDT and RDFT are the only Sun relief valves that are CE marked.
- Will accept maximum pressure at port 2: suitable for use in cross port relief circuits.
- Back pressure on the tank port (port 2) is directly additive to the valve setting at a 1:1 ratio.
- Suitable for use in load holding applications.
- Valve is relatively insensitive to varying oil temperatures and oil borne contamination.
- Pressure settings from 100 bar up to 422 bar are approved and certified by TÜV
- Each delivery contains a TÜV-Approval, which is a certification of the excess operating pressure and the approved flow, an EC Declaration of conformity and an instructional manual.
- Incorporates the Sun floating style construction to minimize the possibility of internal parts binding due to excessive installation torque and/or cavity/cartridge machining variations.

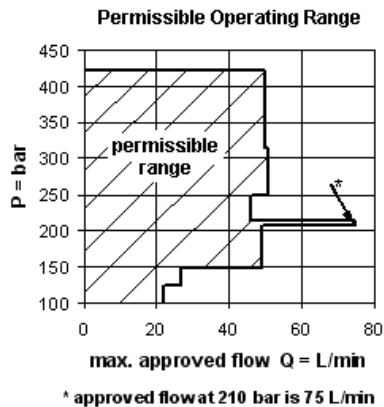
Special Notes

- U.S. Patent #4,742,846; European Patent Pending

Technical Data

	U.S. Units	Metric Units
Cavity		T-10A
Capacity	19.8 gpm	75 L/min.
Maximum Valve Leakage at Reseat	10 drops/min.	0,7 cc/min.
Response Time - Typical		2 ms
Series (from Cavity)		Series 1
U.S. Patent #		4,742,846
Reseat		>90 % of Set Pressure
Adjustment - Number of Clockwise Turns to Increase Setting		5
Valve Hex Size	7/8 in.	22,2 mm

Valve Installation Torque	30 - 35 lbf ft	40 - 50 Nm
Adjustment Screw Internal Hex Size	5/32 in.	4 mm
Adjustment Locknut/Cap Hex Size	9/16 in.	15 mm
Adjustment Nut Torque	80 - 90 lbf in.	9 - 10 Nm
Seal Kits - Cartridge	Buna: 990-310-007	
Seal Kits - Cartridge	Viton: 990-310-006	
Model Weight	0.42 lb.	0.19 kg.



RDDT-QAN

Control	Adjustment Range	Seal Material	Material/Coating Modifier
Standard Options	Standard Options	Standard Options	Preferred Options
Q* Capped and Lockwired	A 100 - 210 bar (100 - 210 bar) C 315 - 422 bar (315 - 422 bar) W 211 - 314 bar (211 - 314 bar)	N Buna-N V Viton	No modifier (standard material with no special coating) Special Options /AP Stainless Steel, Passivated Control: Q
			<i>Our stainless product line is growing! If you are interested in a stainless option for this model which is not shown please contact Sun.</i>

When the modifier is /AP, the control must be Q

* Special Setting required, specify at time of order