



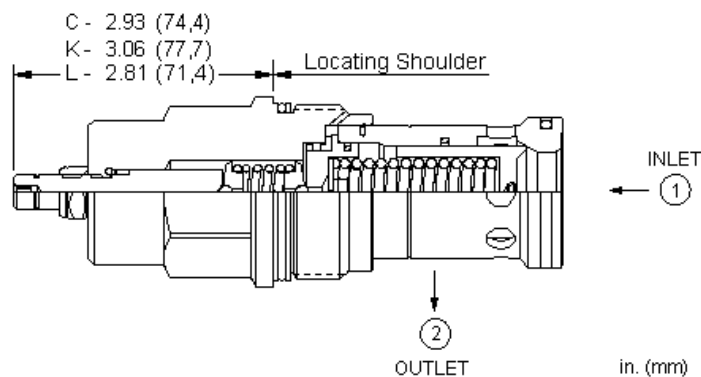
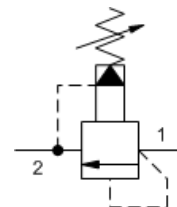
Pilot operated, balanced poppet relief valve

Capacity:
200 gpm (760 L/min.)

Model:
RPKS

Product Description

Pilot-operated, balanced-poppet relief cartridges are normally closed pressure regulating valves. When the pressure at the inlet (port 1) reaches the valve setting, the valve starts to open to tank (port 2), throttling flow to regulate the pressure. These valves are accurate, smooth, quiet, fast, and have low pressure rise vs. flow.



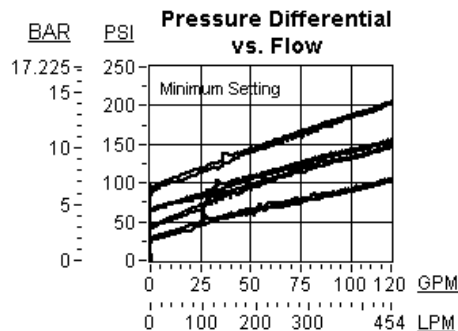
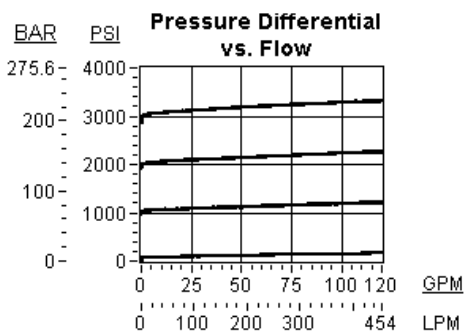
Technical Features

- Because the modulating occurs inside the cartridge, these valves are immune to most of the problems associated with cavitation, namely noise and manifold erosion.
- Will accept maximum pressure at port 2; suitable for use in cross port relief circuits.
- Valve is relatively insensitive to varying oil temperatures and oil borne contamination.
- Main stage orifice is protected by a 150 micron stainless steel screen.
- Back pressure on the tank port (port 2) is directly additive to the valve setting at a 1:1 ratio.
- Corrosion resistant cartridge valves are intended for use in corrosive environments and are identified by the model code suffix /AP (see Option Selection below). External parts are made from stainless steel with titanium or brass components, where applicable. Internal parts are made from carbon steel leaded alloy, the same as standard valves. For further details, please see the Materials of Construction page.
- Incorporates the Sun floating style construction to minimize the possibility of internal parts binding due to excessive installation torque and/or cavity/cartridge machining variations.

Technical Data

	U.S. Units	Metric Units
Cavity		T-18A
Capacity	200 gpm	760 L/min.
Factory Pressure Settings Established at	4 gpm	15 L/min.
Maximum Operating Pressure	5000 psi	350 bar
Maximum Valve Leakage at Reseat	10 drops/min.	0,7 cc/min.
Response Time - Typical		7 ms
Series (from Cavity)		Series 4
Adjustment - Number of Clockwise Turns to Increase Setting		5
Valve Hex Size	1 5/8 in.	41,3 mm
Valve Installation Torque	350 - 375 lbf ft	475 - 500 Nm
Adjustment Screw Internal Hex Size	5/32 in.	4 mm

Adjustment Locknut/Cap Hex Size	9/16 in.	15 mm
Adjustment Nut Torque	80 - 90 lbf in.	9 - 10 Nm
Seal Kits - Cartridge	Buna: 990-318-007	
Seal Kits - Cartridge	Viton: 990-318-006	
Model Weight	2.58 lb.	1.17 kg.



RPKS-LAN

Control	Adjustment Range	Seal Material	Material/Coating Modifier
Standard Options	Standard Options	Standard Options	Preferred Options
C Tamper Resistant - Factory Set	A 100 - 3000 psi (7 - 210 bar), 1000 psi (70 bar) Standard Setting	N Buna-N	No modifier (standard material with no special coating)
K Handknob	B 50 - 1500 psi (3.5 - 105 bar), 1000 psi (70 bar) Standard Setting	V Viton	Special Options
L Standard Screw Adjustment	C 150 - 6000 psi (10.5 - 420 bar), 1000 psi (70 bar) Standard Setting		/AP Stainless Steel, Passivated
	N 60 - 800 psi (4 - 55 bar), 400 psi (28 bar) Standard Setting		Control: L
	Q 60 - 400 psi (4 - 28 bar), 200 psi (14 bar) Standard Setting		Control: C
	W 150 - 4500 psi (10.5 - 315 bar), 1000 psi (70 bar) Standard Setting		

Our stainless product line is growing! If you are interested in a stainless option for this model which is not shown please contact Sun.

When the modifier is /AP, the control must be C or L

Customer specified setting stamped on hex.